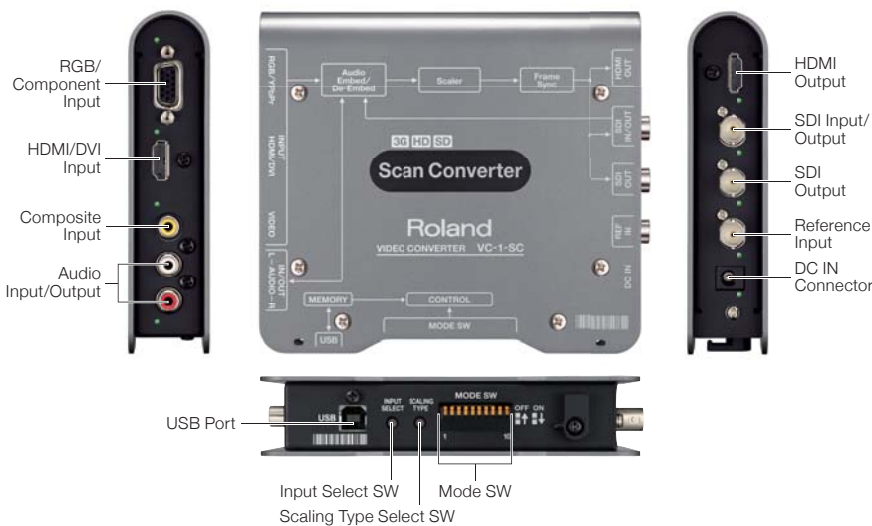


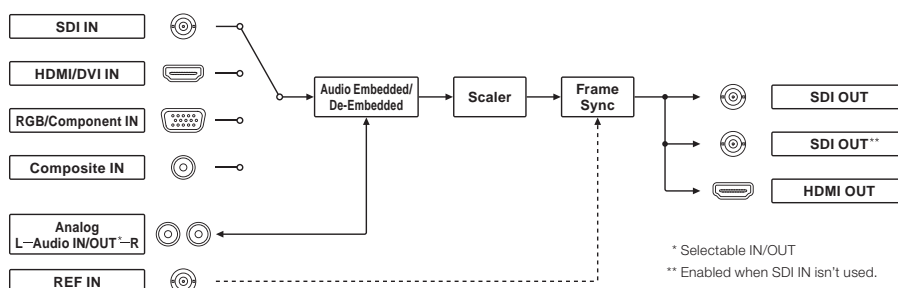
Roland Scan Converter VC-1-SC

Up/Down/Cross Scan Converter to SDI/HDMI with Frame Sync



- 3G (Level A and B)/HD/SD SDI In/Out
- HDMI In/Out
- RGB/Component In
- Composite In
- HDCP support
- Built-in Frame Synchronizer and Scaler
- Up/Down/Cross, Frame Rate*, I/P, and Aspect Ratio Conversion
- * Frame skip/repeat type
- Audio embedding or De-embedding
- VC-1 RCS, Dedicated PC/Mac Software App

■ Block Diagram



■ MODE SW

NO	MODE	OFF	ON
10	CONTROL	MODE SW	MEMORY
9	3G-SDI Type	Level A	Level B
8	NTSC Setup	0 IRE	7.5 IRE
7	Output Format	SD	720p
6			1080i
6			1080p
5	Output Frame Rate	59.94 Hz	50 Hz
4	AUDIO Embedded/De-Embedded Ch Sel	1 + 2	3 + 4
3			5 + 6
3			7 + 8
2	SDI Audio Group	G1/G2	G3/G4
1	Analog AUDIO	IN	OUT

SPECIFICATIONS VC-1-SC

Input Connectors

RGB/Component	<p>Video Format: 1920 x 1080/60p/59.94p/50p/60i/59.94i/50i/24PsF/23.98PsF (Conforms to SMPTE 274M), 1280 x 720/60p/59.94p/50p (Conforms to SMPTE 296M), 720 x 480/59.94p/59.94i, 720 x 576/50p/50i</p> <p>PC Format: 640 x 480/60/72/75/85Hz, 800 x 600/56/60/72/75/85Hz, 1024 x 768/60/70/75/85Hz, 1280 x 768/60/75/85Hz, 1360 x 768/60Hz, 1152 x 864/75Hz, 1400 x 900/60/75/85Hz, 1280 x 960/60/85Hz, 1280 x 1024/60/75/85Hz, 1400 x 1050/60/75Hz, 1680 x 1050/60Hz, 1600 x 1200/60Hz, 1920 x 1200/60Hz Reduced blanking (Conforms to VESA DMT Version 1.0 Revision 11)</p>
---------------	---

HDMI

Video Format: 1920 x 1080/60p/59.94p/50p/30p/29.97p/25p/24p/23.98p/60i/59.94i/50i, 1280 x 720/60p/59.94p/50p/30p/29.97p/25p/24p/23.98p, 720 x 480/59.94p/59.94i, 720 x 576/50p/50i (Conforms to CEA-861-E)

PC Format: 640 x 480/60/72/75/85Hz, 800 x 600/56/60/72/75/85Hz, 1024 x 768/60/70/75/85Hz, 1280 x 768/60/75/85Hz, 1360 x 768/60Hz, 1152 x 864/75Hz, 1400 x 900/60/75/85Hz, 1280 x 960/60/85Hz, 1280 x 1024/60/75/85Hz, 1400 x 1050/60/75Hz, 1680 x 1050/60Hz, 1600 x 1200/60Hz, 1920 x 1200/60Hz Reduced blanking (Conforms to VESA DMT Version 1.0 Revision 11)

Color Format: 10 bits YCC 4:2:2, 8 bits YCC 4:4:4, 8 bits RGB 4:4:4

Audio Format: Linear PCM, 24 bits, 48 kHz, 8 ch

Composite

Video Format: NTSC, PAL

SDI

Video Format: 1920 x 1080/60p/59.94p/50p/30p/29.97p/25p/24p/23.98p/60i/59.94i/50i, 1920 x 1080/30PsF/29.97PsF/25PsF/24PsF/23.98PsF (Conforms to SMPTE 274M), 1280 x 720/60p/59.94p/50p/30p/29.97p/25p/24p/23.98p (Conforms to SMPTE 296M), 720 x 480/59.94i, 720 x 576/50i (Conforms to ITU-R BT.601-5)

Color Format: 10 bits YCC 4:2:2

Audio Format: Linear PCM, 24 bits, 48 kHz, 16 ch (Conforms to SMPTE 299M, SMPTE 272M-C)

Output Connectors

SDI

Video Format: 1920 x 1080/59.94p/50p/59.94i/50i (Conforms to SMPTE 274M), 1280 x 720/59.94p/50p (Conforms to SMPTE 296M), 720 x 480/59.94i, 720 x 576/50i (Conforms to ITU-R BT.601-5)

Color Format: 10 bits YCC 4:2:2

Audio Format: Linear PCM, 24 bits, 48 kHz, 2 ch (Conforms to SMPTE 299M, SMPTE 272M-C)

HDMI

Video Format: 1920 x 1080/59.94p/50p/59.94i/50i, 1280 x 720/59.94p/50p, 720 x 480/59.94i, 720 x 576/50i (Conforms to CEA-861-E)

Audio Format: Linear PCM, 24 bits, 48 kHz, 2 ch

Processing

Resolution Conversion

Selectable Full/Letter Box/Crop/Dot-by-Dot Type

Frame Rate Conversion

Frame Skip/Repeat Type

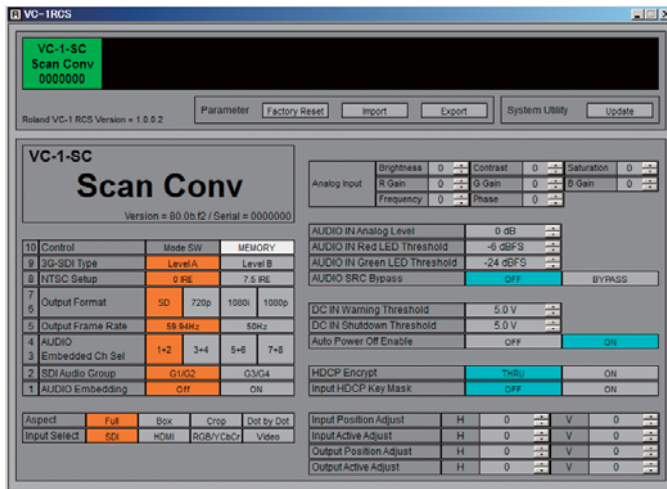
Audio embedding/de-embedding

2ch

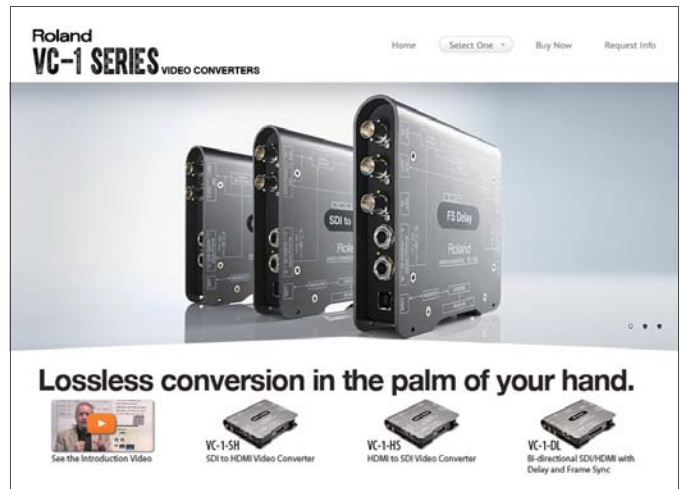
Frame Synchronize

Enabled when reference signal is present.

Dedicated PC/Mac software app. VC-1 RCS



VC-1 series website



For more information about the Roland VC-1-SC or other VC-1 series Video Converters visit: www.vc1series.com

VC-1 series line-up



VC-1-SH
SDI to HDMI Video Converter



VC-1-HS
HDMI to SDI Video Converter



VC-1-DL
Bi-directional SDI/HDMI
with Delay and Frame Sync

