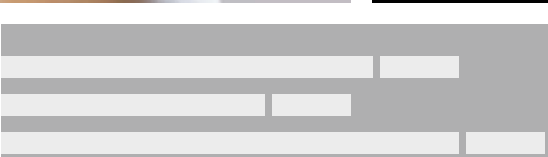
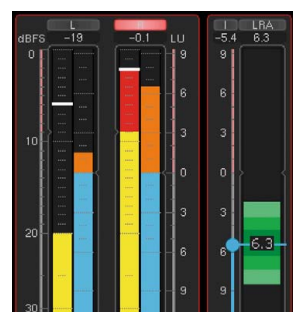
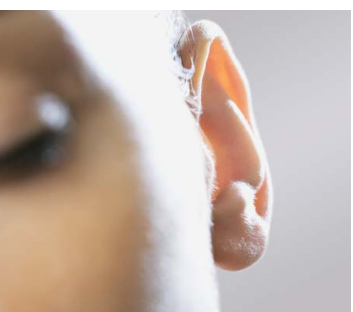


Loudness Simplified TouchMonitor TM3 | TM3 Smart



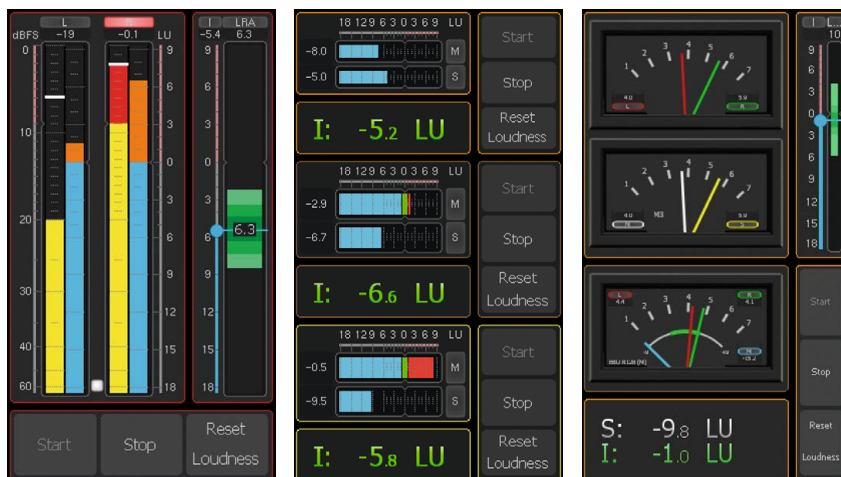
TouchMonitor TM3 | TM3 Smart



Loudness Simplified

Professional Loudness, True Peak and PPM metering at an affordable price with easy and flexible preset control.

The compact TouchMonitor TM3 comes with a capacitive 4.3" touch screen for vertical or horizontal use and intuitive preset control. With its feature list, it is the ideal solution for editorial offices, edit suites, and small control rooms. It handles analog or digital stereo signals (TM3) and digital 6-channel signals (TM3-6CH, TM3S).





- 4.3" Touch screen for vertical or horizontal use
- Flexible display layout with scalable instruments
- Separate interface box with audio I/O, USB, GPIO
- Audio: analog balanced/unbalanced, S/PDIF, AES3
- Stereo/6-channel operation (6-channel with TM3-6CH, TM3S only)
- Retrofittable software license for 6-ch. measurements
- Loudness: EBU R128, ITU-R BS.1770-3/1771-1, ATSC A/85, ARIB, OP-59, AGCOM, CALM, custom
- Single channel and summing loudness bargraphs
- Loudness Test Time Control, Loudness Chart option
- Loudness range (LRA) with MagicLRA
- PPM & True Peak, Correlation
- Moving Coil option (needle instruments)
- SPL & Dialnorm
- Time Code Reader option
- Numerical display
- Comprehensive set of presets
- Devicer DC1 (Device Configurator software for Windows® 7/8 & Mac OS X® 10.6. to 10.9.)



The TouchMonitor TM3 is an entry-level metering solution consisting of a display unit with 4.3" touch screen for vertical or horizontal use and a separate interface box. The TM3's flexible user interface allows for quick and simple preset selection. Presets can be configured in detail using the Devicer DC1 for Mac OS X® or Windows®. The Devicer's GUI lets you select, configure and position the instruments you need in a convenient way. The screen layout can be previewed any time so that you always see how your preset will look like on the TM3.

Besides PPM and True Peak instruments, the TM3 features comprehensive loudness measuring features conforming to all relevant international standards (EBU R128, ITU-R BS.1770-3/1771-1, ATSC A/85, ARIB, OP-59, AGCOM, CALM Act). Loudness instruments include single-channel and summing bargraphs, loudness range, loudness chart (option) and numerical displays. With the Moving Coil option relevant values may be displayed on needle instruments.

TM3. Loudness Simplified.

Product Overview

TouchMonitor TM3 Table-Top Units (2-Channel or 6-Channel)

consisting of display units with 4.3" touch screen for vertical and horizontal operation and remote interface box (one cable for data and supply, approx. 2 m)

• Display Options (Display Unit)

Flexible screen layout with scalable instruments	Loudness measurement: EBU R128, ATSC A/85 ITU-R BS.1770-3/1771-1 ARIB, OP-59, AGCOM, CALM, custom	Single channel and summing loudness bargraphs, Loudness Test Time Control	Loudness Range (LRA) with MagicLRA	Numerical loudness Display	SPL measurement	Peak and True Peak measurement	Correlation	Comprehensive set of presets (Personalizing with Devicer DC1*)	Dialnorm measurement (with 6-channel version only)
--------------------------------------------------	---------------------------------------------------------------------------------------------------	---------------------------------------------------------------------------	------------------------------------	----------------------------	-----------------	--------------------------------	-------------	----------------------------------------------------------------	----------------------------------------------------

*) Devicer DC1 is the Device Configurator software for Windows® 7/8 and Mac OS X® 10.6, to 10.9, for personalizing the units. This software is available for download in members area of RTW's web site (Service/Manuals & Software).

• Connection Options (Interface Box)

	Input Analog* (unbalanced)	Input Analog* (balanced)	In-/Output S/PDIF (digital, unbalanced, 75 Ω)	In-/Outputs AES3 (digital, balanced, 110 Ω)	USB	GPIO	+24 V DC
Type	Stereo (L, R)	Stereo (L, R)	Stereo In, Stereo Out	3 x Stereo In, 3 x Stereo Out	Full Speed 2.0	Remote control	Supply voltage
Connector	2 x RCA (150 mV to 30 V, via potentiometer)	25-pin Sub-D +6 dBu (0 to +10 dBu, via software)	2 x RCA	25-pin Sub-D	Mini-B Data transfer between Devicer DC1 and TM3	RJ-12 (6P6C) External function or preset control	Type Binder 710 locking 4-pin low voltage connector

*) Cannot be used in parallel!

TM3 Versions

TM3 (2-channel Stereo)	Input sources alternatively selectable, a maximum of 2 input channels can be displayed at a time!	•	•	•	incl. power supply
TM3-6CH, TM3S (6-channel)	Input sources alternatively selectable, a maximum of 6 input channels can be displayed at a time!	•	•	•	incl. power supply

Licences (Software Modules) for TM3 and TM3-6CH; in TM3S (TM3 Smart) activated yet

TM3-SW6UPG - Software licence for upgrading TM3 for 6-ch. processing. After activation, the features are identical to the TM3-6CH version.	TM3-SWMC: Moving Coil - Expands TM3 and TM3-6CH with the Moving Coil instrument to display relevant values on needle instruments.	TM3-SWTCR: Timecode Reader - Expands TM3 and TM3-6CH to allow external timecode signals to be decoded, displayed and used.	TM3-SWB: Software Bundle - Licence upgrade: Expands TM3/TM3-6CH with all licences, Loudness Chart instrument and upcoming instruments.
---------------------------------------------------------------------------------------------------------------------------------------------------	------------------------------------------------------------------------------------------------------------------------------------------	-----------------------------------------------------------------------------------------------------------------------------------	-----------------------------------------------------------------------------------------------------------------------------------------------

Accessories

1161 Extension cable 10 m, enlarges the distance display unit and interface box up to 12 m	1162 Snake cable, 2 m, 25-p. Sub-D to 5 XLR-F, 3 XLR-M (for AES3 In/Out)	1166 Mounting plate with 3/8" thread for display unit to be mounted to e. g. goosenecks, mic stands	1168-R Wide voltage power supply (100 - 240 V AC/24 V DC 2.7 A)
---------------------------------------------------------------------------------------------------	---------------------------------------------------------------------------------	------------------------------------------------------------------------------------------------------------	------------------------------------------------------------------------

Dimensions

W x H x D in mm (approx.)	
Display Unit	82,5 x 138 x 50
Interface Box	146 x 29 x 85



Windows is either registered trademark or trademark of Microsoft Corporation in the United States and/or other countries. Mac OS X is trademark of Apple Inc., registered in the U. S. and other countries.

© 11/2016 | Changes without notice | PITM3E01