

A flowing, vibrant red fabric is draped across the frame, creating a sense of movement and depth. The fabric's folds and highlights are captured against a dark, almost black background, which makes the red color stand out prominently. The overall composition is elegant and artistic.

*the **O**rt of optics*

Angēnieux[®]

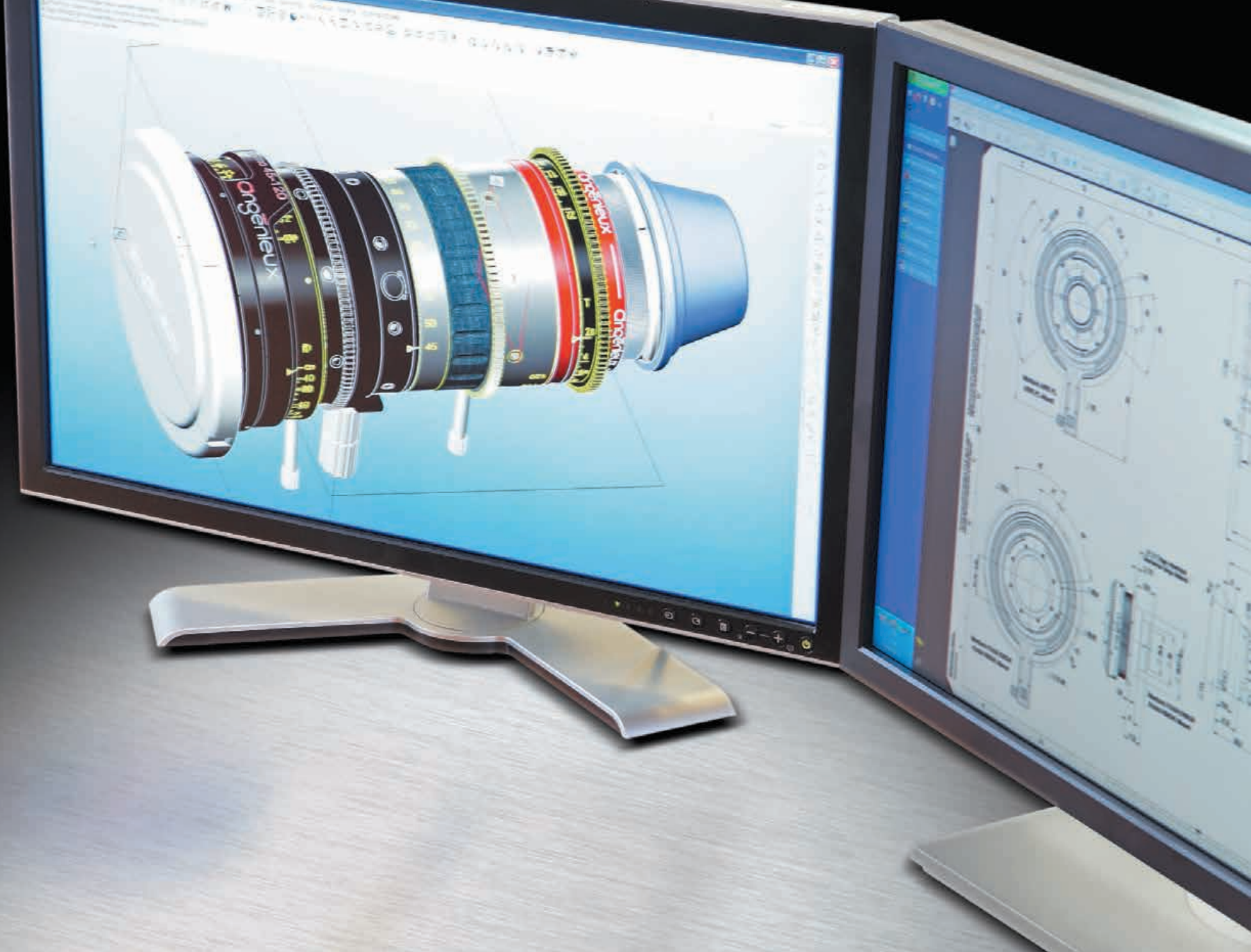
SEPTEMBER 2015 COLLECTION



The timeless art of optics

Angénieux has transformed the design and manufacturing processes for professional 35mm and digital production lenses into an art form. For over 75 years, we have continued to maintain the highest quality manufacturing standards at our headquarters and production facility in Saint-Heand, France. This dedication to excellence has resulted in innovations in zoom lens technology that are recognized around the world. Today we continue to develop innovative products that fulfill our customers' needs for optics that will deliver superior performance well into the future.

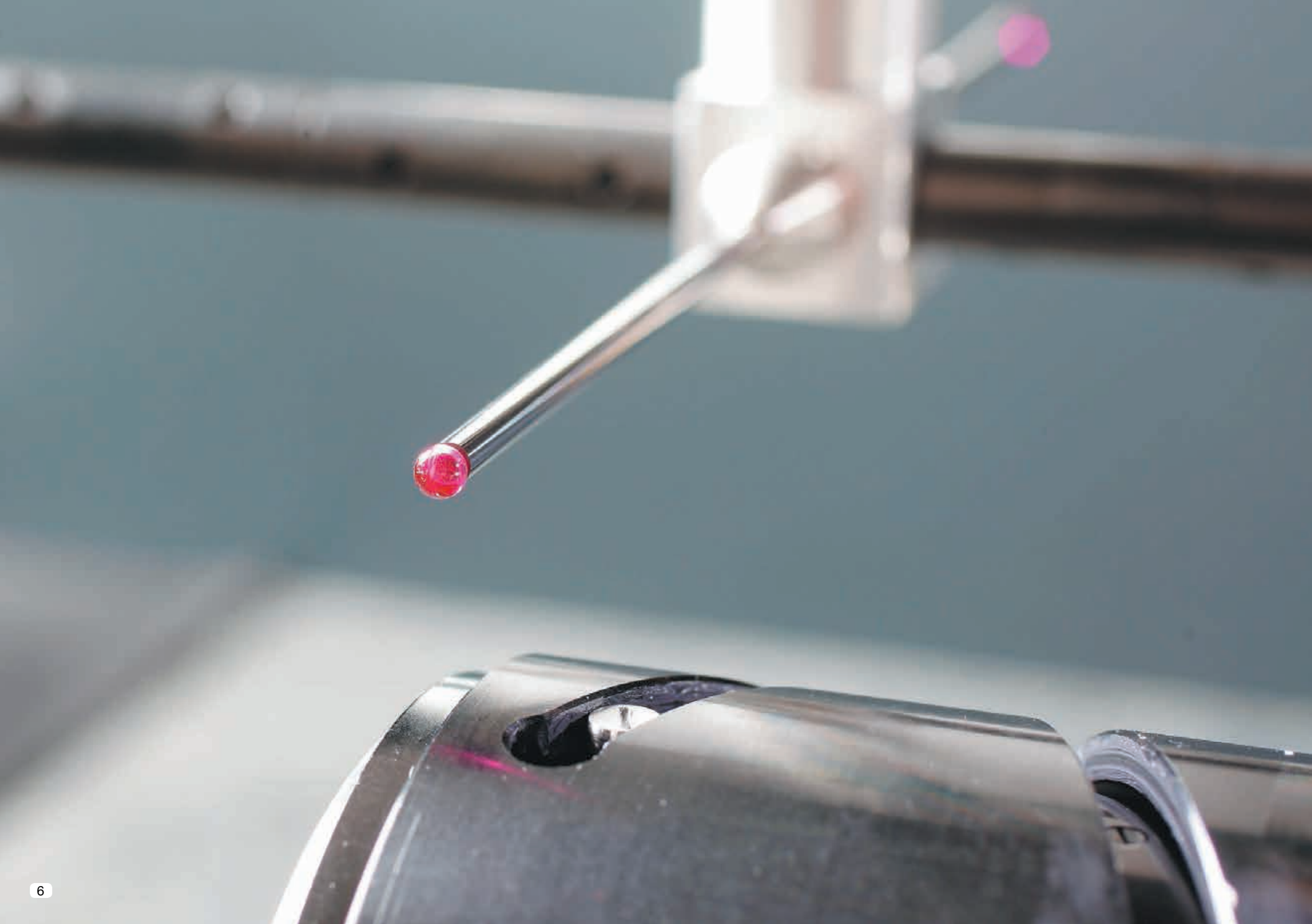




The art of innovation

Our unwavering drive to envision and produce superior zoom lenses has been widely recognized by the most prestigious organizations in the world. In September 2005 Angénieux received an Emmy Award® “for lens technology developments for solid state imagers for cameras in high definition formats” from the National Academy of Television Arts and Sciences. In February 2009, The Academy of Motion Picture Arts and Sciences presented Angénieux with a Scientific and Engineering Award® “for the optical and mechanical designs of the compact and lightweight Optimo 15-40mm and 28-76mm zoom lenses for handheld motion picture photography.” We also received the 2012 Technical Achievement Award in February 2012 from the Society of Camera Operators for the design of the Optimo 15-40mm, 28-76mm and 45-120mm hand-held zoom lenses. In September 2012 we were acknowledged with a CINEC Award for outstanding innovation in optics for our Optimo 45-120mm zoom lens. And in November 2014, Thales Angénieux was honored to be the recipient of the BSC Bert Easey Technical Award, presented at the annual BSC Operators Night in London.







The art of manufacturing

We believe that commitment to precision in all areas of manufacturing makes it possible for you to realize your creative vision without compromise. That is why we practice the strictest quality control measures at every point in the production process. Certified ISO 9001 since 1990, Angénieux further demonstrated our concern for environmentally mindful practices through compliance with ISO 14001 in 2010. This overall dedication to excellence was acknowledged in 2013 when Angénieux was designated a living heritage company under the French government's *Entreprise du Patrimoine Vivant* program, recognizing companies with a living legacy and tradition of merit and innovation.





Capturing the art of film around the world

Whether used on digital cinematography cameras or 35mm film cameras, for documentaries, blockbuster movies or any of today's cutting edge productions, Angénieux Optimo lenses can be found on production sets around the world, every day. That's because prominent and budding cinematographers alike recognize the unmistakable performance, unique characteristics and the famous Angénieux "touch" that only Angénieux Optimo lenses deliver.





Optimo long lenses for 35mm film and digital production

Setting the standard for optics technology and performance, the Optimo family of long lenses offers a range of zoom lenses to meet the most uncompromising requirements. Manufactured with exquisite precision, they help you bring greater artistry and cinematic expression to your shoot in any format. Optimo long lenses are now the reference lenses in every type of production from feature films, commercials, TV series and video clips to major sports events and concerts.





Available Accessories



Extender 1.4x &
Extender 2x

PV Mount requires a factory swap

Optimo 19.5 - 94

Long Lenses

- » Extremely fast aperture of T2.6
- » 329° focus rotation with over 50 precise focus witness marks and minimal breathing
- » Unrivaled optical performance rivaling prime lenses at equivalent focal lengths
- » PL mount lens. PV mount requires a factory swap
- » Calibrated focus marks available in feet or meters (easily interchangeable focus ring)
- » Very robust and designed for easy maintenance
- » Expanded capabilities with Optimo 2x or 1.4x range extenders

Zoom Ratio: 4.7X
Focal Length: 19.5 - 94 mm
Aperture: f/2.4 – T2.6
MOD: 2 ft - 0.5 in – 0.62 m
Internal Focus: Yes
Image Coverage: S35+: 31.4 mm diagonal

Weight (approx.): 12.3 lbs – 5.6 kg
Length: 335 mm (PL)
330 mm (Panavision)
Front Diameter: 136 mm

Field of view for 35 mm Academic (22x16 mm)

Focal Length:	19.5 mm	94 mm
Horizontal angular field of view:	58.2°	13.4°
Object dimensions at MOD (mm):	344x246	73x54



Available Accessories



Extender 1.4x &
Extender 2x
(with or without iris ring)

PV mount available at partner companies

Canon EF mount available

Optimo 24 - 290

Long Lenses

- » The reference lens of the industry
- » Extremely fast aperture of T2.8 with no ramping
- » 327° focus rotation with now over 70 precise focus witness marks and minimal breathing
- » Unrivaled optical performance across the entire range rivaling prime lenses at equivalent focal lengths
- » PL mount lens. PV mount conversion available at partner companies. Canon EF Mount available
- » Calibrated focus marks available in feet or meters (easily interchangeable focus ring)
- » Expanded capabilities with Optimo 2x and 1.4x range extenders

Zoom Ratio: 12X
Focal Length: 24 - 290 mm
Aperture: f/2.5 – T2.8
MOD: 4 ft – 1.22 m
Internal Focus: Yes
Image Coverage: 35 mm academic – 30 mm diagonal
With extenders, image coverage becomes S35+: 31.4 mm diagonal

Weight (approx.): 24.2 lbs – 11 kg
Length: 440 mm
Front Diameter: 162 mm

Field of view for 35 mm Academic (22x16 mm)

Focal Length:	24 mm	290 mm
Horizontal angular field of view:	49.2°	4.2°
Object dimensions at MOD (mm):	799x571	67x49



Available Accessories



Extender 1.4x &
Extender 2x

PV Mount requires a factory swap

Optimo 28 - 340

Long Lenses

- » The reference lens of the industry with additional reach on tele side and larger image coverage
- » Extremely fast aperture of T3.2
- » 327° focus rotation with over 70 precise focus witness marks and minimal breathing
- » Unrivaled optical performance rivaling prime lenses at equivalent focal lengths
- » PL mount lens. PV mount requires a factory swap
- » Calibrated focus marks available in feet or meters (easily interchangeable focus ring)
- » Expanded capabilities with Optimo 2x and 1.4x range extenders

Zoom Ratio: 12X
Focal Length: 28 - 340 mm
Aperture: f/2.9 – T3.2
MOD: 4 ft - 0.5 in – 1.23 m
Internal Focus: Yes
Image Coverage: S35+: 31.4 mm diagonal

Weight (approx.): 24.4 lbs – 11.1 kg
Length: 454 mm (PL)
449 mm (Panavision)
Front Diameter: 162 mm

Field of view for 35 mm Academic (22x16 mm)

Focal Length:	28 mm	340 mm
Horizontal angular field of view:	42.7°	3.8°
Object dimensions at MOD (mm):	687x493	58x42



Optimo lightweight lenses for 35mm film and digital production

Our suite of Optimo lightweight hand-held zoom lenses – including 15-40mm, 28-76mm and 45-120mm – lets you pack light without sacrificing performance. They deliver the extremely fast apertures with outstanding contrast and color reproduction that have made Optimo the choice for high-end productions by DPs all over the world. Take our family of Optimo zoom lenses on your next shoot and experience the difference.





Available Accessories



Angénieux Servo Unit provides control of zoom, focus and iris
Optimo 15-40 Lens + ASU = 2.62 kg / 5.7 lbs

3 configurations:

- Broadcast mode
- Cinema mode
- With wireless control system

(see our specific brochure)



Extender 1.4x &
Extender 2x

PV mount available

Canon EF mount available

Optimo 15 - 40

Lightweight Series

- » Renowned Optimo quality in a lightweight lens
- » Extremely fast aperture of T2.6 with no ramping
- » 320° focus rotation with over 50 precise focus witness marks and no breathing
- » Unrivaled optical performance rivaling prime lenses at equivalent focal lengths
- » PL mount lens. PV and Canon EF mounts available
- » Calibrated focus marks available in feet or meters (easily interchangeable focus ring on “New Design” zooms)
- » Expanded capabilities with Optimo 2x and 1.4x range extenders

Zoom Ratio: 2.7X
Focal Length: 15 - 40 mm
Aperture: f/2.4 – T2.6
MOD: 2 ft – 0.6 m
Internal Focus: Yes
Image Coverage: S35+: 31.4 mm diagonal

Weight (approx.): 4.2 lbs – 1.92 kg
Length: 186 mm
Front Diameter: 114 mm

Field of view for 35 mm Academic (22x16 mm)

Focal Length:	15 mm	40 mm
Horizontal angular field of view:	73°	31.2°
Object dimensions at MOD (mm):	611x437	230x169



Available Accessories



Angénieux Servo Unit provides control of zoom, focus and iris
Optimo Lens + ASU = 2.62 kg / 5.7 lbs

3 configurations:

- Broadcast mode
- Cinema mode
- With wireless control system

(see our specific brochure)



Extender 1.4x &
Extender 2x

PV mount available

Canon EF mount available

Optimo 28 - 76

Lightweight Series

- » Renowned Optimo quality in a lightweight lens
- » Extremely fast aperture of T2.6 with no ramping
- » 320° focus rotation with over 50 precise focus witness marks and no breathing
- » Unrivaled optical performance rivaling prime lenses at equivalent focal lengths
- » PL mount lens. PV and Canon EF mounts available
- » Calibrated focus marks available in feet or meters (easily interchangeable focus ring on “New Design” zooms)
- » Expanded capabilities with Optimo 2x and 1.4x range extenders

Zoom Ratio: 2.7X
Focal Length: 28 - 76 mm
Aperture: f/2.4 – T2.6
MOD: 2 ft – 0.6 m
Internal Focus: Yes
Image Coverage: S35+: 31.4 mm diagonal

Weight (approx.): 4.2 lbs – 1.92 kg
Length: 186 mm
Front Diameter: 114 mm

Field of view for 35 mm Academic (22x16 mm)

Focal Length:	28 mm	76 mm
Horizontal angular field of view:	42.8°	16.4°
Object dimensions at MOD (mm):	345x246	126x92



Available Accessories



Angénieux Servo Unit provides control of zoom, focus and iris
Optimo Lens + ASU = 2.65 kg / 5.8 lbs

3 configurations:

- Broadcast mode
- Cinema mode
- With wireless control system

(see our specific brochure)



Extender 1.4x &
Extender 2x

PV mount available

Canon EF mount available

Optimo 45 - 120

Lightweight Series

- » Renowned Optimo quality in a lightweight lens with an incredible range
- » Extremely fast aperture of T2.8 with no ramping
- » 320° focus rotation with over 50 precise focus witness marks and minimal breathing
- » Unrivaled optical performance rivaling prime lenses at equivalent focal lengths
- » PL mount lens. PV and Canon EF mounts available
- » Calibrated focus marks available in feet or meters (easily interchangeable focus ring)
- » Expanded capabilities with Optimo 2x and 1.4x range extenders

Zoom Ratio: 2.7X
Focal Length: 45 - 120 mm
Aperture: f/2.6 – T2.8
MOD: 3 ft 1 in – 0.94 m
Internal Focus: Yes
Image Coverage: S35+: 31.4mm diagonal

Weight (approx.): 4.3 lbs – 1.95 kg
Length: 203 mm
Front Diameter: 114 mm

Field of view for 35 mm Academic (22x16 mm)

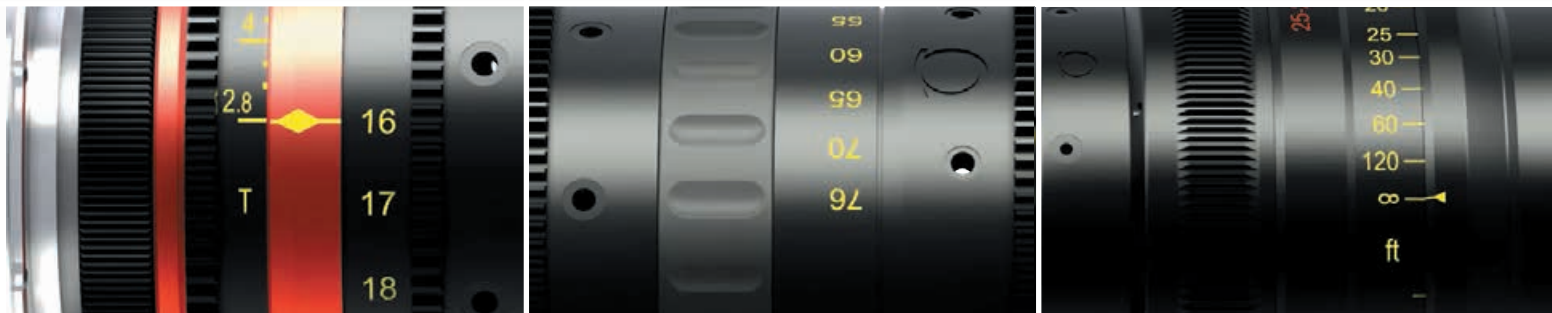
Focal Length:	45 mm	120 mm
Horizontal angular field of view:	27.4°	10.5°
Object dimensions at MOD (mm):	415x298	154x113



Bring your content to life with true cinematic looks and 4k+ quality

The proliferation of 4K digital screens and the advent of ultra definition television are escalating the demands for high quality motion picture content. A vast spectrum of new generation digital 35mm cameras has become available, and is being deployed in numerous production environments encompassing movies, dramas, commercials, concerts, and live sports events.

For over three quarters of a century, Angénieux has been serving the motion picture industry with zoom lenses of uncompromising quality, represented by the Optimo lens series. Optimo 24-290mm, 28-340mm and other Angénieux Cine lenses are already largely and commonly used for 4K concert and sport event shoots. The new Optimo Style family of zoom lenses inherits the virtues of the famed Optimo Cine lenses, with extra compatibility and production efficiency. All Optimo Style lenses are carefully manufactured to achieve a resolution of 4K and beyond, making them a sound investment for years to come. The Optimo Style family is initially comprised of two lightweight zoom lenses with an optional motorization system, and a 10x zoom lens inspired by the legendary Angénieux 25-250mm zoom.





Available Accessories



Angénieux Servo Unit provides control of zoom, focus and iris
Optimo 16-40 Lens + ASU = 2.62 kg / 5.7 lbs

3 configurations:

- Broadcast mode
- Cinema mode
- With wireless control system

(see our specific brochure)



Extender 1.4x &
Extender 2x

PV mount available

Canon EF mount available

Optimo Style 16 - 40

Lightweight Series

- » Extremely fast aperture of T2.8 with no ramping
- » 320° focus rotation with over 20 precise focus witness marks and no breathing
- » Optical design optimized for today's large format single sensor middle budget cameras with extended compatibility
- » Calibrated focus marks in feet or meters
- » Optimo quality and cinematic look at an affordable price
- » PL mount lens. PV and Canon EF mounts available
- » Expanded capabilities with Optimo 2x and 1.4x range extenders

Zoom Ratio: 2.5X
Focal Length: 16 - 40 mm
Aperture: f/2.6 – T2.8
MOD: 2 ft – 0.6 m
Internal Focus: Yes
Image Coverage: S35+: 31.4 mm diagonal

Weight (approx.): 4.2 lbs – 1.92 kg
Length: 186 mm
Front Diameter: 114 mm

Field of view for 22x16 mm

Focal Length:	16 mm	40 mm
Horizontal angular field of view:	69°	31.2°
Object dimensions at MOD (mm):	569x408	230x170



Available Accessories



Angénieux Servo Unit provides control of zoom, focus and iris
Optimo + ASU = 2.62 kg / 5.7 lbs

3 configurations:

- Broadcast mode
- Cinema mode
- With wireless control system

(see our specific brochure)



Extender 1.4x &
Extender 2x

PV mount available

Canon EF mount available.

Optimo Style 30 - 76

Lightweight Series

- » Extremely fast aperture of T2.8 with no ramping
- » 320° focus rotation with over 20 precise focus witness marks and no breathing
- » Optical design optimized for today's large format single sensor middle budget cameras with extended compatibility
- » Calibrated focus marks in feet or meters
- » Optimo quality and cinematic look at an affordable price
- » PL mount lens. PV and Canon EF mounts available
- » Expanded capabilities with Optimo 2x and 1.4x range extenders

Zoom Ratio: 2.5X
Focal Length: 30 - 76 mm
Aperture: f/2.6 – T2.8
MOD: 2 ft – 0.6 m
Internal Focus: Yes
Image Coverage: S35+: 31.4 mm diagonal

Weight (approx.): 4.2 lbs – 1.92 kg
Length: 186 mm
Front Diameter: 114 mm

Field of view for 22x16 mm

Focal Length:	30 mm	76 mm
Horizontal angular field of view:	40.2°	16.4°
Object dimensions at MOD (mm):	321x232	126x92



Available Accessories



Extender 1.4x &
Extender 2x

PV mount available
Canon EF mount available

Optimo Style 25 - 250

- » Low chromatic aberration, telecentricity and low distortion, ideal for high performance S35 digital cameras
- » Optimo quality and cinematic look at an affordable price
- » Optical design optimized for today's large format single sensor middle budget cameras with extended compatibility
- » Internal focus with minimal breathing
- » Image circle of 31.4 mm diagonal for perfect illumination of the S35 sensors
- » Very robust and precise zoom and focus mechanics with Angénieux unique rod guiding system design
- » Calibrated focus marks with easily interchangeable focus scale ring from feet to meters
- » Integrated filter holder for standard screw in filters
- » Optional front protective glass
- » Designed for easy maintenance
- » $\frac{1}{8}$ Technology metadata interface*
- » PL mount lens. PV and Canon EF mounts available

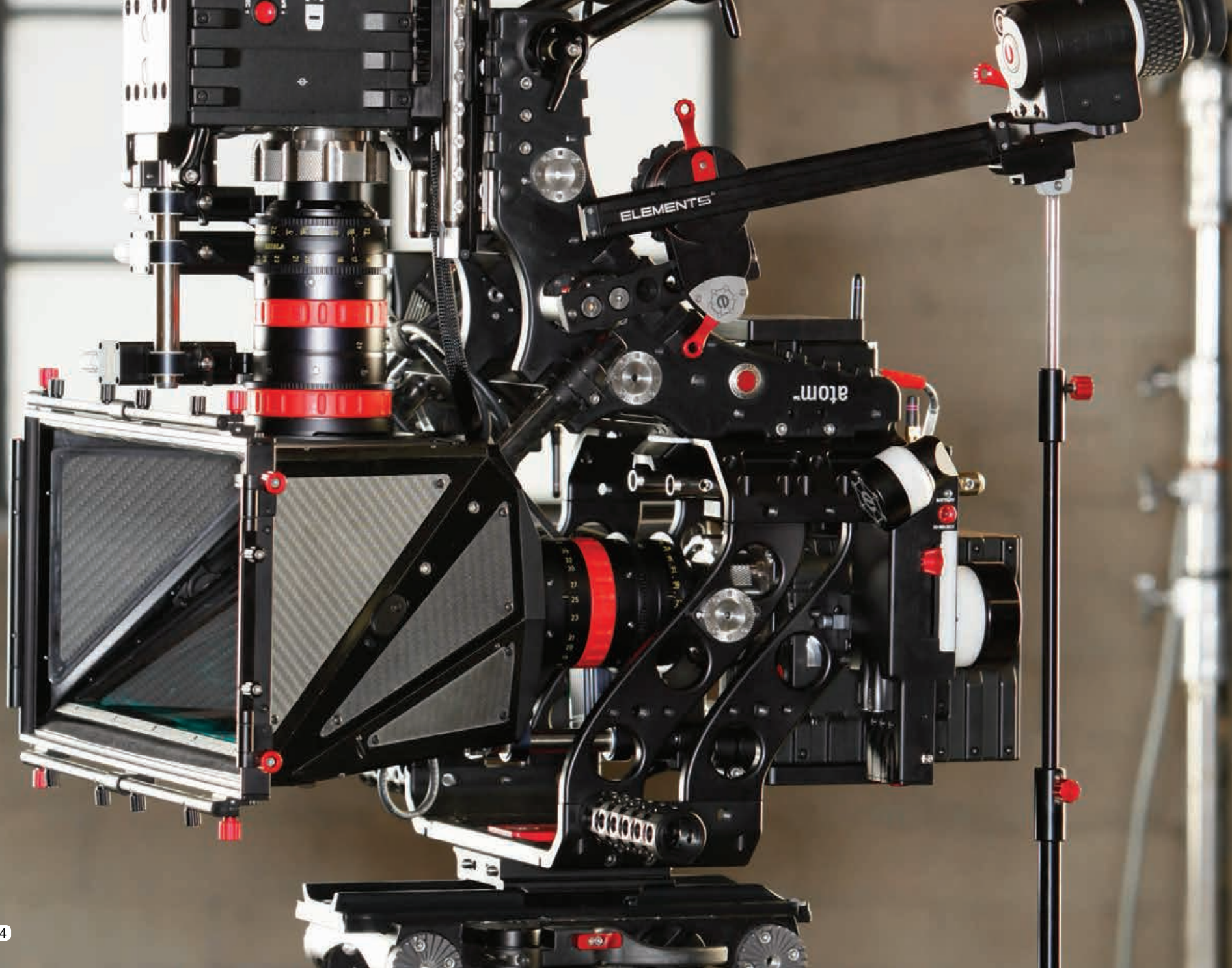
Field of view for 22x16 mm

Focal Length:	25 mm	250 mm
Horizontal angular field of view:	47.6°	5°
Object dimensions at MOD (mm):	789x565	78.9x58.1

Zoom Ratio: 10X
Focal Length: 25 - 250 mm
Aperture: f3.2 – T3.5 with no ramping
MOD: 4 ft – 1.22 m
Internal Focus: Yes
Image Coverage: S35+: 31.4 mm diagonal

Weight (approx.): 16 lbs – 7.3 kg
Length: 377.4 mm
Front Diameter: 136 mm

* $\frac{1}{8}$ is a registered trademark of Cooke Optics Limited

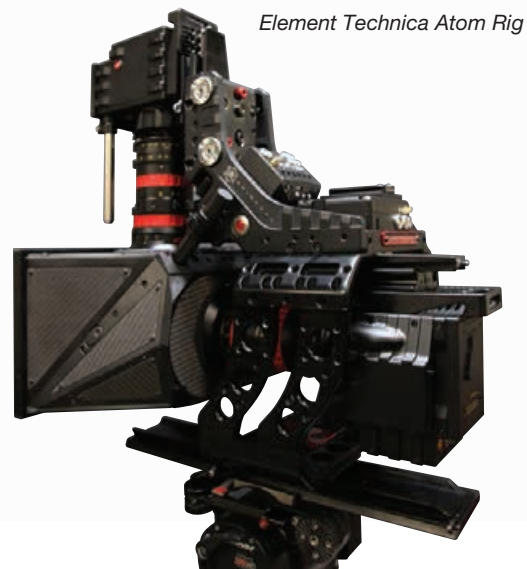


Optimo DP 3D ready package

Stereoscopic production requires optical precision that is significantly more demanding than that required in a 2D production. The Optimo 3D ready lenses were designed and calibrated to meet and exceed these performance standards. Optimo 3D ready lenses are factory optimized with features like easily adjustable tracking, harmonized focus marks between the two lenses and like optical qualities, all to help acquire significantly improved 3D picture quality. 3D productions further benefit from flexibility of a compact, lightweight zoom lens and its ability to instantly and precisely change focal length without the need of dismantling a rig for frequent lens swaps.

Features include:

- » similar “matched” optical quality
- » easily adjustable tracking
- » harmonized focus and zoom marks
- » customized travel case
- » **available in 16-42 mm or 30-80 mm**



Element Technica Atom Rig



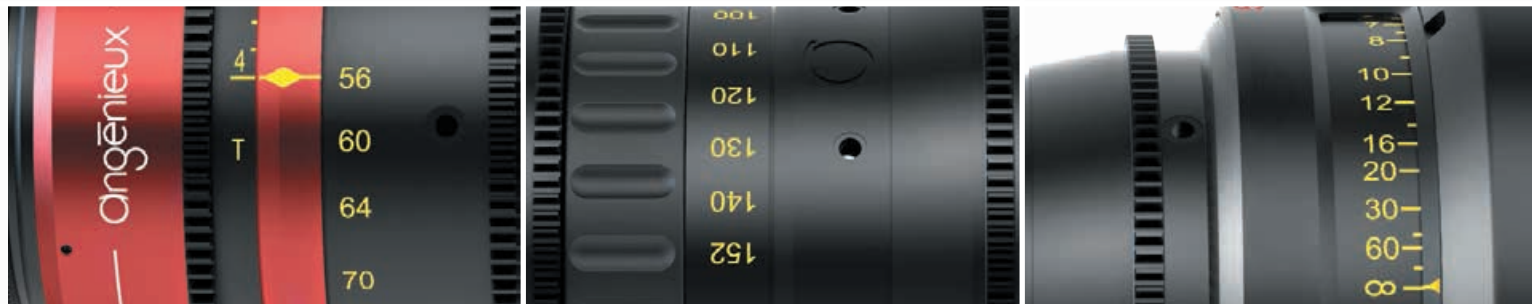
21st Century 3D BX-3



Optimo anamorphic lenses for Cinema Scope production with true aspect ratio

Angénieux's line of anamorphic zoom lenses enhances technique and creativity by giving film-like, dimensional character to images. Their unique optical design combining spherical and cylindrical elements in the same group delivers exceptional sharpness and lower distortion compared to typical anamorphic lenses. With two compact zoom models to meet all your anamorphic needs, you can bring more freedom of movement into the creative process with superior results, both in hand-held mode and on a Steadicam.

Based on the optical design of the 2012 SOC and 2009 Academy of Motion Picture award winning Optimo 28-76mm and 15-40mm zoom lenses, the 56-152mm 2S and the newly introduced 30-72mm 2S zoom lenses deliver exceptional optical performance never before seen with an anamorphic zoom.





Available Accessories



Angénieux Servo Unit provides control of zoom, focus and iris
Optimo + ASU = 2.9 kb / 6.4 lbs

3 configurations:

- Broadcast mode
- Cinema mode
- With wireless control system

(see our specific brochure)

PV Mount available

Canon EF mount to come

Optimo Anamorphic 56 - 152

2S Series

- » Renowned Optimo quality in anamorphic
- » Anamorphic zoom with 2x squeeze
- » Fast aperture of T4 with no ramping
- » 320° focus rotation with over 50 focus marks and no breathing
- » Superior optical performance with image flatness and low distortion
- » PL mount lens. PV mount available. Canon EF mount to come
- » Calibrated focus marks available in feet or meters (easily interchangeable focus scale ring)

Zoom Ratio: 2.7X
Focal Length: 56 - 152 mm
Aperture: f/3.6 – T4
MOD: 2 ft 1 in – 0.63 m
Internal Focus: Yes
Image Coverage: 4 perf. scope+: 28.8 mm diagonal

Weight (approx.): 4.8 lbs – 2.2 kg
Length: 210 mm
Front Diameter: 114 mm

Field of view for 35 mm 4 perf. (22x18.6 mm)

Focal Length:	56 mm	152 mm
Horizontal angular field of view:	42.8°	16.4°
Vertical angular field of view:	18.7°	7.1°



Available Accessories



Angénieux Servo Unit provides control of zoom, focus and iris
Optimo + ASU = 3.1 kg / 6.8 kg

3 configurations:

- Broadcast mode
- Cinema mode
- With wireless control system

(see our specific brochure)



Extender 1.4x &
Extender 2x

PL mount available

Canon EF mount available

Optimo Anamorphic 30 - 72

2S Series

- » Renowned Optimo quality in anamorphic
- » Anamorphic zoom with 2x squeeze
- » Fast aperture of T4 with no ramping
- » 320° focus rotation with over 50 focus marks and no breathing
- » Superior optical performance with image flatness and low distortion
- » PL mount lens. PV and Canon EF mounts available
- » Calibrated focus marks available in feet or meters (easily interchangeable focus scale ring)

Zoom Ratio: 2.4X
Focal Length: 30 - 72 mm
Aperture: f/3.6 – T4
MOD: 2 ft 2 in – 0.65 m
Internal Focus: Yes
Image Coverage: 4 perf. scope+: 28.8 mm diagonal

Weight (approx.): 5.3 lbs – 2.4 kg
Length: 227 mm
Front Diameter: 114 mm

Field of view for 35 mm 4 perf. (22x18.6 mm)

Focal Length:	30 mm	72 mm
Horizontal angular field of view:	72.5°	34°
Vertical angular field of view:	34.4°	14.7°



Customer service with Angénieux quality

Meeting our customers' demands for excellence goes beyond the exceptional quality of our lenses to the highest level of personalized service. Our service team works tirelessly to deliver the best quality, along with the fastest and most cost-effective support possible, no matter where you are located.

Customer Service

Quality

Each step of our service process is subject to rigorous controls under Thales Angénieux's ISO 9001 quality certification.

Skill

Every repair benefits from the incomparable expertise of our technicians. Their experience, along with their proficiency in utilizing the most current specialized technologies to analyze and calibrate our premium optics, ensures the best possible outcome for our customers.

Speed

For us it is a point of honor to serve our customers as swiftly as possible.

Convenience

Our elite, highly trained international network of professional partners ensures your service needs can be managed locally and with the highest quality. Keep track of your service status easily and conveniently on our website. Individual serial numbers assigned to each Angénieux lens enable provenance to be maintained throughout the life of the lens.

See our service partner list on pages 48-49.

Price

We use only the highest quality parts and take the time required to provide the most comprehensive and rigorous repairs possible. We also strive to provide you with the most economical repair achievable within those parameters. In addition, your service estimate, written after a full examination of your lens at the Angénieux factory, is always detailed and personalized.

*For any request, please contact:
angenieuxservice@fr.thalesgroup.com*



In their own words: industry professionals praise Optimo lenses

“...The two zooms (15-40 and 28-76) covered the whole range of focuses we needed. Most of the shots were done in a 28-40 mm range and often at 32 mm. So we simply inter-changed the two zooms. The longest focus we disposed of was 76 mm. We had to do two shots at 20 mm, that’s all. With the sensitivity of today’s digital cameras, T2.6 aperture is no longer a problem. Even on a boat, at 800 asa, it’s very good...”

– Guillaume Schiffman, Cinematographer, AFC

Feature film En Solitaire / Turning Tide by Christophe Offenstein

“...I used the 24-290 Optimo as soon as it came out, as it exactly matched my need in term of quality of skins and in colorimetry. It was for me the ideal lens. I also found these qualities, of course, with the 28-340, as well as with the lightweight Optimo 15-40 & 28-76. I could switch from a fixed camera with long focal to a shoulder camera with harmony. My shooting method is really focused on that. I usually mix with Cooke S4 and it works very well because I find the same quality...”

– Jean-Marie Dreujou, Cinematographer, AFC

Feature film Le Totem du Loup / Wolf Totem by Jean-Jacques Annaud

“I’m a big fan of Optimo. For me they are really convenient and time saving lenses in terms of operation. I have been using them extensively in action scenes and a lot of emotional scenes...”

“...I have shot with Optimo from -9 degrees centigrade (15.8°F) to 43 degrees centigrade (109.4°F), in varied terrain and conditions from the mountains of Kashmir to the beautiful landscapes of Ireland, or the beaches of Goa to coalfields of Raniganj.”

– Aseem Mishra, WICA

Feature Film Gunday by Ali Abbas Zafar

“...The scenes inside the bordello, the “Golden Pavilion,” were often shot with the zoom, with Gong Her’s father, and also the exterior day scenes. Kar Wai likes shooting with the zoom to give the character a certain depth. It’s very hard to explain all the nuances, but the sense of a sequence can sometimes be reinforced through the use of the zoom. It becomes a narrative element in the writing...”

– Philippe Le Sourd, Cinematographer, AFC ASC

Feature film The Grandmaster by Wong Kar Wai

“...Visually, the colorimetry is the remarkable characteristic of this zoom. It faithfully reproduced the nuances of tone that are there in reality. Mechanically, it’s exceptional – in situations where you change focus suddenly, the lens never “breathes.” And obviously its lower weight and bulkiness differentiate it from other anamorphic zooms, which gives it great versatility...”

– Gustavo Biazzi, Cinematographer

Feature film le Ciel du Centaure by Hugo Santiago – shot entirely with the Anamorphic Optimo 56-152 2S

“We used the Optimo 56-152 on the movie “Child 44.” It was the perfect lens for hand held work. The focal lengths were exactly right. The lens is very sharp and optically on the same level as the longer Optimo zoom. For me it is a must have on any anamorphic movie. A much needed lens. Thank you Angénieux.”

– Oliver Wood, Cinematographer

Feature film Child 44 by Daniel Espinosa

“Gyro-Stabilized Systems develops leading-edge aerial camera systems like the C520 and C516 and our customers require the best lenses available for production work. The Angénieux Optimo line of lenses are considered the highest quality lenses by many aerial cinematographers worldwide, so it was a simple choice to ensure our gimbal designs were capable of integrating their lenses. The Angénieux team understand our specific business needs at GSS and have delivered on their promises each and every time.”

– Jason Fontaine, Managing Director

From GSS – Gyro-Stabilized Systems (Grass Valley – CA)

“...Both Optimos 24-290 and 15-40 proved themselves to be extremely versatile and productive during our day-to-day work. If in Joseph we had a set of fixed lenses plus the Optimos, in Pecado Mortal the Optimo lenses became our main lenses, specially in the studio scenes, as they allowed us to set the speed of shots that is required when shooting a tele-novela, which means 20 scenes per day in the studio. We basically used 8 Alexas with 6 Optimo 24-290 and 6 Optimo 15-40 plus a few fixed focal lenses. We used two studios with 3 cameras in each of them and two cameras for on-location shots. Optimo 24-290 were used inside the studio practically the whole time, while 15-40 and a fixed focal lens were chosen in more specific shots. On location, we used 15-40 most of the time together with a few fixed focal lenses...”

– Alexandre Avancini, Director

The TV Series Pecado Mortal / Mortal Sin by Alexandre Avancini

“For a few years now, I’ve been incorporating organic motivated zooms into all my work. I find that the use of the zoom makes shots feel more immediate and intense. I dreamed for a long time of the perfect set of zooms. I was looking for zooms that could satisfy my desire for superior optics, optimum range, ergonomics and overall functionality. When the news of the Angénieux lightweight zooms was released, I was excited to work with them. They are truly amazing and totally satisfy everything I’ve been looking for in a set of lenses. I currently outfit each of my cameras with a full set of all three focal ranges and have been thrilled with the results.”

– Lisa Wiegand, Cinematographer

The TV Series Chicago Fire

“The Optimo 19.5-94 worked very well with the Red Dragon. We shot in the 2:1 aspect ratio with a final 2.40 mask in 6K resolution.”

– Adrian Correia, DP

Feature Film Ava’s Possessions by Jordan Galland

“It’s a fantastic modern lens right now. I mean, their short zooms are revolutionary. If you have to make a low-budget film, you can take one camera, and you can take those two zooms, and you can shoot the entire film with two short zooms. You can hand-hold, you can use them as variable primes.”

– Dariusz Wolski, ASC

Feature Film Exodus: Gods and Kings by Ridley Scott

read full testimonials on www.angenieux.com

TECHNICAL SPECIFICATIONS

35 mm Film and Digital CINEMA		Optimo								
Lens type		Optimo 15 - 40	Optimo 15 - 40 + ASU	Optimo 28 - 76	Optimo 28 - 76 + ASU	Optimo 45 - 120	Optimo 45 - 120 + ASU	Optimo 19.5 - 94	Optimo 24 - 290	Optimo 28 - 340
Zoom ratio		2.7x	2.7x	2.7x	2.7x	2.7x	2.7x	4.7x	12x	12x
Focal length min	mm	15	15	28	28	45	45	19.5	24	28
Focal length max	mm	40	40	76	76	120	120	94	290	340
Aperture		f/2.4 - T2.6	f/2.4 - T2.6	f/2.4 - T2.6	f/2.4 - T2.6	f/2.6 - T2.8	f/2.6 - T2.8	f/2.4 - T2.6	f/2.5 - T2.8	f/2.9 - T3.2
MOD	Meters	0.6	0.6	0.6	0.6	0.94	0.94	0.62	1.22	1.23
	Feet	2'	2'	2'	2'	3' 1"	3' 1"	2' 0.5"	4'	4' 0.5"
Image coverage (1)	Format	S35+	S35+	S35+	S35+	S35+	S35+	S35+	35	S35+
	mm	31.4	31.4	31.4	31.4	31.4	31.4	31.4	30	31.4
Sensor size	mm	For 35 mm Academic - 22x16 mm								
Horizontal angular FOV at focal min	Degrees	73°	73°	42.8°	42.8°	27.4°	27.4°	58.2°	49.2°	42.7°
Horizontal angular FOV at focal max	Degrees	31.2°	31.2°	16.4°	16.4°	10.5°	10.5°	13.4°	4.2°	3.8°
FOV at MOD at focal min	mm	611x437	611x437	345x246	345x246	415x298	415x298	344x246	799x571	687x493
FOV at MOD at focal max	mm	230x169	230x169	126x92	126x92	154x113	154x113	73x54	67x49	58x42
Front diameter	mm	114	114	114	114	114	114	136	162	162
Length	mm	186	186	186	186	203	203	335 / 330	440	454 / 449
Mount		PL	PL	PL	PL	PL	PL	PL	PL	PL
Weight	kg	1.92 kg	2.62 kg	1.92 kg	2.62 kg	1.95 kg	2.65 kg	5.6 kg	11 kg	11.1 kg
	lbs	4.2 lbs	5.7 lbs	4.2 lbs	5.7 lbs	4.3 lbs	5.8 lbs	12.3 lbs	24.2 lbs	24.4 lbs
Accessories										
EXtender – 2x (1)	EX 2x	yes	yes	yes	yes	yes	yes	yes	yes (with or without iris ring)	yes
EXtender – 1.4x (1)	EX 1.4x	yes	yes	yes	yes	yes	yes	yes	yes (with or without iris ring)	yes
Panavision Mount		yes	yes	yes	yes	yes	yes	(**)	(*)	(**)
Canon EF Mount (***)		yes	yes	yes	yes	yes	yes	no	yes	no

(1) With extenders, image coverage increases up to 35 mm.

(*) Panavision (PV) mount available at partner companies.

(**) Requires a factory swap.

(***) Designed to replace the PL mount and allow Optimo (except 17-80, 19.5-94 and 28-340) and Optimo Style to be used on EF mount cameras.

Canon EF mount for Optimo 24-290, Optimo Anamorphic, Optimo Style 25-250 and Lightweight are all different.

Please contact us for specific questions regarding the image coverage of different cameras.

TECHNICAL SPECIFICATIONS

35 mm Film and Digital CINEMA	
Lens type	
Zoom ratio	
Focal length min	mm
Focal length max	mm
Aperture	
MOD	Meters
	Feet
Image coverage (1)	Format
	mm
Sensor size	mm
Horizontal angular FOV at focal min	Degrees
Horizontal angular FOV at focal max	Degrees
FOV at MOD at focal min	mm
FOV at MOD at focal max	mm
Front diameter	mm
Length	mm
Mount	
Weight	kg
	lbs
Extender 2x (1)	EX 2x
Extender 1.4x (1)	EX 1.4x
Panavision Mount	
Canon EF Mount (***)	

Optimo Anamorphic			
Optimo Anamorphic 56 - 152 2S	Optimo 56 - 152 A2S + ASU	Optimo Anamorphic 30 - 72 2S	Optimo 30-72 A2S + ASU
2.7x	2.7x	2.4x	2.4x
56	56	30	30
152	152	72	72
f/3.6 - T4	f/3.6 - T4	f/3.6 - T4	f/3.6 - T4
0.63	0.63	0.65	0.65
2' 1"	2' 1"	2' 2"	2' 2"
4 perf. scope+	4 perf. scope+	4 perf. scope+	4 perf. scope+
28.8	28.8	28.8	28.8
22x18.6 mm			
42.8°	42.8°	72.5°	72.5°
16.4°	16.4°	34°	34°
344x143	344x143	593x244	593x244
126x54	126x54	246x107	246x107
114	114	114	114
210	210	227	227
PL	PL	PL	PL
2.2 kg	2.9 kg	2.4 kg	3.1 kg
4.8 lbs	6.4 lbs	5.3 lbs	6.8 lbs
no	no	yes	yes
no	no	yes	yes
yes	yes	yes	yes
no	no	no	no

Optimo Style				
Optimo Style 16 - 40	Optimo Style 16 - 40 + ASU	Optimo Style 30 - 76	Optimo Style 30 - 76 + ASU	Optimo Style 25 - 250
2.5x	2.5x	2.5x	2.5x	10x
16	16	30	30	25
40	40	76	76	250
f/2.6 - T2.8	f/2.6 - T2.8	f/2.6 - T2.8	f/2.6 - T2.8	f/3.2 - T3.5
0.6	0.6	0.6	0.6	1.22
2'	2'	2'	2'	4'
S35+	S35+	S35+	S35+	S35+
31.4	31.4	31.4	31.4	31.4
22x16 mm				
69°	69°	40.2°	40.2°	47.6°
31.2°	31.2°	16.4°	16.4°	5°
569x408	569x408	321x232	321x232	789x565
230x170	230x170	126x92	126x92	78.9x58.1
114	114	114	114	136
186	186	186	186	377.4
PL	PL	PL	PL	PL
1.92 kg	2.62 kg	1.92 kg	2.62 kg	7.3 kg
4.2 lbs	5.7 lbs	4.2 lbs	5.7 lbs	16 lbs
yes	yes	yes	yes	yes
yes	yes	yes	yes	yes
yes	yes	yes	yes	yes
yes	yes	yes	yes	yes

(1) With extenders, image coverage increases up to 35 mm.

(*) Panavision (PV) mount available at partner companies.

(**) Requires a factory swap.

(***) Designed to replace the PL mount and allow Optimo (except 17-80, 19.5-94 and 28-340) and Optimo Style to be used on EF mount cameras.

Canon EF mount for Optimo 24-290, Optimo Anamorphic, Optimo Style 25-250 and Lightweight are all different.

Please contact us for specific questions regarding the image coverage of different cameras.

Angénieux Worldwide Partners for Sales and Services

• PARTNERS AUTHORIZED TO REPAIR LENSES

AFRICA

ALGERIA

BYA ELECTRONICS SPA
SALES
7 Rue DAGUERRE,
Telemly, Algeria
Tel : + 213 216 39622
Email : contact@bya-electronic.com
Email : isseri.k@gmail.com
Web : www.bya-electronic.com

MOROCCO

LTS MAROC
SALES
6 rue des hôpitaux
20 360 Casablanca
Tel : + 212 (0)522 48 20 28
Fax : + 212 (0)522 48 06 71
Email : ali@lts-network.com
Web : www.lts-network.com

NIGERIA

KONTAKT PRO NIGERIA
SALES
Lagos & Abuja, Nigeria
Tel : + 234 80 5222 8888
Email : admin2s@kontakt.com.sg
Email : vinod@kontakt.com.sg
Web : www.kontaktigeria.com

SOUTH AFRICA

MOVIE MART
SALES
52 Paarden Eiland Road, Paarden Eiland,
7405, Cape Town, South Africa
Email : colinb@moviemart.co.za

MOVIE MART
SALES
17 Eastern Service Road
Eastgate Extension 8 Sandton
2196, Johannesburg
Email : petros@moviemart.co.za
Web : www.moviemart.co.za

TUNISIA

SOGER
SALES
35 Rue du 1er Juin
Belvedere
1002 TUNIS
Tel : + 216 71 790 922
Fax : + 216 71 781 789
Email : soger.com@soger.com.tn

AMERICAS

ARGENTINA

BVS TV SA
SALES
Avenida Diaz Velez 3965 PB
Buenos Aires
Tel : +54 11 4958 5638
Email : info@bvstv.com
Web : www.bvstv.com

BRAZIL

EUROBRAS
SALES
Av. Graca Aranha
19 - GR.202
20030-002 RIO DE JANEIRO
Tel : + 55 21 2240 3399
Fax : + 55 21 2240 6430
Email : eurobras@eurobrastv.com.br

MEXICO

CINETEC SA
SALES
Protasio Tagle N° 79-A
Col. San Miguel Chapultepec
11850 MEXICO DF
Tel : + 52 55 5516 0084
Fax : + 52 55 5273 0221
Email : curd@cinetec.com.mx
Email : gunther@cinetec.com.mx
Web : www.cinetec.com.mx

VENEZUELA

CINEMATERIALES CA
SALES & SERVICE
Av A. Jahn, Entre 3ra y 4ta
Transv. Calle Finca, Qta Santa Lucia
Los Palos Grandes
1702 CARACAS
Tel : + 58 2284 4144
Fax : + 58 2284 4610
Email : edscheuren@cinematusa.com

USA

THALES COMPONENTS CO
ANGÉNIEUX DIVISION
SALES & SERVICE
40G Commerce Way
Totowa, NJ 07512-0540
Tel : + 1-973-812-3858
Fax : + 1-973-812-9049
Sales : eparyzka@tccus.com
Service : jbouchut@tccus.com

ABELCINE BURBANK

SALES & SERVICE
801 South Main St.
Burbank, CA 91506
Tel : + 1-818-972-9078
Tel : + 1-888-700-4416
Fax : + 1-818-972-2673
Email : orders@abelcine.com
Web : www.abelcine.com

ABELCINE NEW YORK

SALES & SERVICE
609 Greenwich Street
New York, NY 10014
Tel : + 1-888-223-1599
Tel : + 1-212-462-0100
Fax : + 1-212-462-0199
Web : www.abelcine.com

BANDPRO FILM & DIGITAL

SALES
3403 West Pacific Ave
Burbank, CA 91505
Tel : + 1-818-841-9655
Fax : + 1-818-841-7649
Web : www.bandpro.com

DUCLOS LENSES

SALES & SERVICE
20222 Bahama Street
Chatsworth, CA 91311
Tel : + 1-818-773-0600
Email : info@ducloslenses.com
Web : www.ducloslenses.com

ENG OPTICAL SERVICES, INC

SERVICE
1811 E. 1100 N. Road
Milford, IL 60953
Tel : + 1-888-907-2836
Fax : + 1-815-889-4264
Email : engoptical@springmail.com

HOT ROD CAMERAS

SALES
1413 Cole Place
Hollywood, CA 90028
Tel : +1 323.230.3589
Fax : +1 323.466.3589
Email : email@hotrodcameras.com
Web : www.hotrodcameras.com

WEST COAST CINE VIDEO, INC.

SALES
5739 Kanan Road, #307
Agoura Hills, CA 91301
Tel : + 1-818-742-8090
Email : sales@westcoastcinevideo.com
Web : www.westcoastcinevideo.com

ASIA / PACIFIC

AUSTRALIA

CINE AUSTRALASIA
SALES & SERVICE
H74, 63-85 Turner Street
PORT MELBOURNE VIC 3207
Tel : + 613 9646 6646
Fax : + 613 9646 6648
Email : cine_aust@cine-equipment.com
Web : www.cine-equipment.com

CHINA

INFRATRANS VISION CHINA CO LTD
SALES
Room 803 Tower B
No. 7 Beitucheng Xilu
Chaoyang District
Beijing China 100029
Tel : + 86 10 8227 5579
Fax : + 86 10 6480 2969
Email : info@itvc-cn.com
Web : www.itvc-cn.com

JEBSEN INDUSTRIAL (CHINA)

COMPANY LTD
SALES
19F East Ocean Centre
618 Yan An Road East
200001 SHANGHAI
Tel : + 86 21 23064774
Fax : + 86 21 23064899
Email : emilyli@jebesen.com
Web : www.jebesenindustrial.com

JEBSEN INDUSTRIAL (CHINA)

COMPANY LTD
SALES & SERVICE
10th Floor, Tower 2
Henderson Center
No.18 JianGuoMenNei Dajie
100005 BEIJING
Tel : + 86 10 85198552
Tel : + 86 10 85198699
Email : crystalli@jebesen.com
Web : www.jebesenindustrial.com

JEBSEN INDUSTRIAL (CHINA)

COMPANY LTD
SALES
28/F, Tower B, China International Center
No.33 Zhongshan San Road
Guangzhou 510055, P.R. China
Tel : + 86 20 8713 7122
Fax : + 86 20 8713 7199
Email : eddyzheng@jebesen.com

JEBSEN INDUSTRIAL TECHNOLOGY

COMPANY LTD
SALES & SERVICE
28 Yun Ping Road
28F Lee Gardens II
Causeway Bay, Hong Kong
Tel : + 852 29 238 774
Tel : + 852 29 262 337
Fax : + 852 28 822 017
Email : junefung@jebesen.com
Email : willyoon@jebesen.com
Web : www.jebesenindustrial.com

JAPAN

NAC IMAGE TECHNOLOGY INC.
SALES & SERVICE
Aoyama Plaza Building
2-11-3 Kita-Aoyama
Tokyo 107-0061
Tel : + 81(0)3 3796 7903
Fax : + 81(0)3 3796 7908
Email : kawasima@camnac.jp
Web : www.nacinc.jp

MALAYSIA

CINE EQUIPMENT SDN. BHD
SALES
No 177, Jalan Lancang
Taman Seri Bahtera, Cheras
56100 KUALA LUMPUR
Tel : + 603 91331153
Tel : + 603 91335720
Fax : + 603 91326351
Email : cine_kl@cine-equipment.com
Web : www.cine-equipment.com

THE PHILIPPINES

CINE EQUIPMENT PHILS., INC.
SALES
Unit 1 88 Shaw
88 Shaw Boulevard
Oranbo, Pasig City
The Philippines 1600
Tel : + 63 2 631 8188
Fax : + 63 2 631 9188
Email : cine_ph@cine-equipment.com
Web : www.cine-equipment.com

SINGAPORE

CINE EQUIPMENT PTE LTD
SALES & SERVICE
10C Jalan Ampas, # 08-02
Ho Seng Lee Flatted Warehouse
SINGAPORE 329513
Tel : + 65 6252 5089
Fax : + 65 6255 1981
Email : cine_sin@cine-equipment.com
Web : www.cine-equipment.com

SOUTH KOREA

SAMA DIGITAL MEDIA
SOLUTION INC.
SALES
Dongkook Metrian 6F
84-2 Mullae 3ga, Yeongdeungpo
Seoul 150-836, Korea
Tel : +82 2 2636 1300
Fax : +82 2 2636 0040
Email : sales@samagvc.com (sales)
Service : innk@samagvc.com (service)
Web : www.samakorea.com

TAIWAN

CINE EQUIPMENT (TAIWAN) CO., LTD
SALES
4F, No 132
Lide Street, Zhonghe Dist.
New Taipei City 23512
Taiwan (ROC)
Tel : + 886 - 2 - 3234 1234
Fax : + 886 - 2 - 3234 1010
Email : jack@cine-equipment.com

THAILAND

CINE EQUIPMENT CO LTD THAILAND
SALES
580/15 Soi Ram Kham Haeng
39 (Soi Sahakarn-Pramong)
Pracha U-thit Road
Wangthonglang
10310 BANGKOK
Tel : + 66 2 936 6557
Fax : + 66 2 935 6044
Email :
cine_thai@cine-equipment.com
Web : www.cine-equipment.com

EURASIA

GEORGIA

INNOVATOR
SALES
2 Marjani Str.
0186 Tbilisi Georgia
Tel : + 995 322 541431
Fax : + 995 558 133131
Email : barabadze@innovator.ge
Web : http://innovator.ge

RUSSIA

BARS-PRO
SERVICE
Rublevskoe shosse 16 bld 4
121615 Moscow
Tel : + 7 495 415 98 13
Email : mail@bars-pro.ru
Web : www.bars-pro.ru

SERNIA-FILM CO LTD

SALES
Pyrieva Street 2
119285 Moscow
Tel : +7 499 143 23 23
Fax : +7 499 143 00 80
Email : ab@sernia-film.ru
Email : be@sernia-film.ru
Web : www.sernia-film.tv

SINTEX

SALES
Ugrreshkaya Street, 14
115088 Moscow
Tel : + 7 495.679.81.71
Fax : + 7 495.677.38.89
Email : karpov@sintex.ru
Web : www.sintex.ru

TURKEY

KAPRO

SALES
Elektronik Sanayi ve Dış Ticaret Ltd. Şti.
Hasırcıbaşı Caddesi 61/1, 34714,
Kadıköy, İstanbul
Tel : +90 (216) 700 10 35
Fax : +90 (216) 700 10 39
Email : omer@kapro.com.tr
Email : info@kapro.com.tr

EUROPE

AUSTRIA

LB ELECTRONICS GMBH SALES
Doblinger Hauptstrasse 95
1190 WIEN
Tel : + 43 1 360 30
Fax : + 43 1 369 84 43
Email : werner.wolf@lb-electronics.at
Web : www.lb-electronics.at

BELGIUM

VP MEDIA SOLUTIONS SALES
3 place Thomas Balisplein
1160 BRUSSELS
Tel : + 32 2 640 39 94
Fax : + 32 2 640 02 41
Email : kelly.vandenbremt@vpmediasolutions.com
Web : www.vpmediasolutions.com

BOSNIA AND HERZEGOVINA

ROBERT'S PLUS D.O.O. SALES
Marka Marulica 2/V
71000 SARAJEVO
Tel : + 387 33 640 818
Fax : + 387 33 640 818
Email : robertsplus@robertsplus.ba
Web : www.robertsplus.hr

BULGARIA

TECHNO BULGARIA SALES
Vrajdebna District, 32 Str., No. 6
BG-1839 Sofia
Tel : + 359 2 946 0786
Fax : + 359 2 946 3503
Email : peter.petrov@techno.bg
Web : plamen.panayotov@techno.bg

CROATIA

ROBERT'S PLUS D.O.O. SALES
Marasoviceva 67
21000 SPLIT
Tel : + 385 21 315 800
Fax : + 385 21 315 804
Email : robertsplus@robertsplus.hr
Web : www.robertsplus.hr

VISUAL IMPACT HRVATSKA SALES

Bosutska 9
10000 Zagreb, Hrvatska
Tel : +385 1 777 90 24
Fax : +385 1 777 90 24
Email : andrea@visuals.hr
Web : www.visuals.hr

CZECH REPUBLIC

SYNTAX PRAHA SALES
Michelska 21
14100 Praha 4
Tel : + 420 241 482 662
Email : info@syntax.cz
Web : www.syntax.cz

DENMARK

BICO PROFESSIONEL A/S SALES
Mose Alle 16
2610 RODOVRE
Tel : + 45 3584 0295
Fax : + 45 3584 0695
Email : mogens@bico.dk
Web : www.bico.dk

FRANCE

THALES ANGENIEUX SALES & SERVICE
Bd Ravel de Malval
42570 SAINT-HEAND
Tel : + 33 (0)4 77 90 78 99
Fax : + 33 (0)4 77 90 78 03
Email : cecile.bouchou@fr.thalesgroup.com (sales)
Web : www.angenieux.com

ESTONIA

HANNU PRO TALLINN SALES
Tartu mnt 63, 10115, Tallinn, Estonia
Tel : +372 6155290
Tel : +372 5088511
Fax : +372 6155291
Email : meelis.mikker@hannu-pro.com

GERMANY

BEBOB TRADING GMBH SALES
Summerstr. 18
D-82211 Herrsching
Tel : + 49 8152 914 99 58
Email : info@bebob-trading.de
Web : www.bebob.de

GREECE

CALAVITIS S.A. SALES
Antinoros 11,11634, Athens, Greece
Tel : +210 7248144
Fax : +210 7291613
Email : sales@calavitis.gr (sales)
Email : cproterogeropoulos@calavitis.gr
Web : www.calavitis.gr

HUNGARY

REXFILM BROADCAST & COMMUNICATIONS SYSTEMS LTD SALES
Építész u. 26
H-1116 Budapest, Hungary
Tel : +36-1-382-7189
Fax : +36-1-382-7166
Mobile : +36-30-400-6706
Email : Bela.Sztupa@refilm.hu
Web : www.refilm.hu

SOMOS BROADCAST MEDIA ZRT SALES

H-1141 Budapest, Liptovar u.2
Tel : + 36 1 460 8047
Fax : + 36 1 460 8051
Email : Kristof@somosbroadcast.com
Web : www.sbmzrt.hu

ITALY

CARTONI S.P.A. SALES
Via Giuseppe Mirri 13
00159 ROMA
Tel : + 39 064 38 20 02
Fax : + 39 064 35 88 293
Email : alessandro.pacifici@cartoni.com
Email : cartoni@cartoni.com
Web : www.cartoni.com

PANATRONICS SRL SALES

Via Maderna 8
20138 MILANO
Tel : + 39 025 51 95 561
Fax : + 39 025 51 95 658
Email : tecnico@panatronics.com
Web : www.panatronics.com

LATVIA

HANNU PRO RIGA SALES
11 Kugu Str., Riga, LV-1048, Latvia (3rd floor)
Tel : +371 67452206
Tel : +371 67452203
Fax : +371 67624938
Email : Kristaps.Dzenis@hannu-pro.com
Web : www.hannu-pro.com

LITHUANIA

HANNU PRO VILNIUS SALES
Seimyniskiu Str. 1A, LT-09312 Vilnius, Lithuania
Tel : +370 52482565
Tel : +370 68633799
Fax : +370 52482565
Email : Ilja.Kurliandcik@hannu-pro.com

NORWAY

VIDEO 4 SALES
Sandbrekkevegen 100 / 5225
Nesttun-Bergen
Tel : +47 56 90 42 10
Fax : +47 56 90 42 11
Email : firma@video4.no
Web : www.video4.no

POLAND

JBD SA SALES
ul.Tymienieckiego 25 C lok. 314
90-350 Łódź
Tel : + 48 42 290 97 30
Tel : + 48 42 290 97 30
Fax : + 48 42 290 97 30
Email : jbd@jbd.com.pl
Email : slawek@jbd.com.pl
Email : tomasz.slazak@jbd.com.pl
Web : www.jbd.com.pl

PORTUGAL

VIDEOMATER SALES
Av de Padua, N° 10H
1800-297 LISBOA
Tel : + 35 1 218 549 113
Tel : + 35 1 912 567 979
Fax : + 35 1 218 549 112
Email : videomater@sapo.pt

ROMANIA

PBR LTD SALES
32 Corbeni Str. / District 2
020784 BUCHAREST
Tel : + 40 21 316 9673 / 9674
Fax : + 40 21 316 9733
Email : andrea.stan@pbr.com.ro
Web : www.pbrstore.ro

SERBIA & MONTENEGRO

VISUAL IMPACT SERBIA SALES
Oblakovska 28
11040 Beograd
Tel : +381 (11) 369 0043
Email : darko@visuals.ch
Web : www.visuals.rs

SLOVAKIA

SYNTAX BRATISLAVA S.R.O. SALES
Zeleznicna 23
82107 Bratislava
Tel : + 421 2 4552 5471
Email : tomas.sipos@syntax.sk
Web : www.syntax.sk

SPAIN

VIDEO CINE IMPORT SALES
Avda. Somosierra, 20, Nave 4
28703 San Sebastian de los Reyes (MADRID)
Tel : + 34 916 63 64 66
Fax : + 34 916 53 60 30
Email : jesus@videocineimport.com
Email : pedro@videocineimport.com
Email : paco@videocineimport.com
Web : www.videocineimport.com

SWEDEN

CAMERA NORDIC SALES
Industrigatan 4
112 46 Stockholm
Tel : + 46 8 410 462 40
Email : info@cameranordic.com
Web : www.cameranordic.com

SWITZERLAND

VIDEOLINK AG SALES
8800 THALWIL
Tel : + 41 44 723 3880
Fax : + 41 44 723 3881
Email : info@videolink.ch
Web : www.videolink.ch

THE NETHERLANDS

VOCAS SALES & SERVICES SALES
Larenseweg 121
1221 CL Hilversum, The Netherlands
Tel : +31 35 6233707
Email : info@vocas.nl
Web : www.vocas.nl

UK

CVP LONDON SALES & SERVICE
23-25 Shield Drive
West Cross Industrial Estate
Brentford
Middlesex
TW8 9EX
Tel : + 44 (0) 20 8380 7400
Fax : + 44 (0) 20 8380 7410
Email : sales@cvp.com
Web : www.creativevideo.co.uk

CVP MIDLANDS SALES

Priory Mill
Castle Road
Studley
Warwickshire
B80 7AA
Tel : + 44 (0) 1527 854 222
Fax : + 44 (0) 1527 857 666
Email : sales@cvp.com
Web : www.creativevideo.co.uk

UKRAINE

ENGINEER SERVICE SALES
15 Vavulyovkh str.
Kiev, 04060
Tel : +380 (44) 458 49 74/75
Fax : +380 (44) 458 49 73
Email : info@iservice.kiev.ua
Email : oleg@iservice.kiev.ua
Web : www.serv.com.ua

MIDDLE EAST

IRAN

TELEKALA CO LTD SALES
No 1586. Markazi Cinema complex
Engheleb Sq. Shahre
1314 TEHRAN
Tel : + 98 21 66 94 88 54
Fax : + 98 21 66 56 88 82
Email : f_kamrani@telekala.com

ISRAEL

PROLOG OPTICS SALES
4 Ha Horesh Road
P.O.N. 12193
Yehud 56470
Tel : + 972 3 536 4011
Fax : + 972 3 536 4012
Email : tal@prologltd.com
Web : www.prologoptics.com

UNITED ARAB EMIRATES

AMARANTHINE SALES
P.O. Box 124137
Warehouse #37, Road 8, Al Quoz Ind.
Area 1, Interchange 3,
Sheikh Zayed Rd., Dubai
Tel : +971 4 3390944
Fax : +971 4 3390922
Email : f_kamrani@amaranthine.ae
Web : www.amarantine.tv

UNITED ARAB EMIRATES & GCC

ADVANCED MEDIA TRADING LLC SALES
4th floor, 410, Al Khaleej Centre, Bur
Dubai, Dubai United Arab Emirates
Tel : + 971 43529977
Fax : + 971 43529976
Email : peter@amt.tv
Web : www.amt.tv



Thales Angénieux Headquarters
Boulevard Ravel de Malval
42570 Saint-Héand (France)
Tel: +33 (0)4 77 90 78 00
Fax: +33 (0)4 77 90 78 03
angenieux@fr.thalesgroup.com

Thales Angénieux in the USA
40G Commerce Way
Totowa, NJ 07512
Tel: 1 973 812 3858
Fax: 1 973 812 9049
angenieux@tccus.com

Thales Angénieux in Asia
10C Jalan Ampas #08-02
Ho Seng Lee Flatted Warehouse
Singapore 329513
Tel: +65 63 56 81 98
Fax: +65 62 50 60 85
angenieux@fr.thalesgroup.com

Thales Angénieux in India
703-A&B, Tower C – 7th floor
“Konnectus” Building
Bhavbhuti Marg.
New Delhi -110 001 India
Tel: +91 85 8691 1003
angenieux@fr.thalesgroup.com

www.angenieux.com

All products and parts thereof contained herein do not represent or obligate Thales Angénieux or any Thales company from producing, offering, selling, distributing or servicing said products. All characteristics and /or specifications of products contained herein are subject to change without notification. Some products may not be available depending on the country.

Photo copyrights:

(p.8) Wolf Totem / le Totem du Loup © China film Co., LTD / Repérage
(p.9) © Anil Mehta
(p.9) En Solitaire / Turning Tide © Riou
(p.9) Flies the Red Epic Dragon © gyro-Stabilized Systems, LLC
(p.9) Chicago Fire © Wolff films
(p.10) Jean-Marie Dreujou AFC on Wolf Totem / China Film Co LTD –
Repérages – Optimo 28-340 with 2x extender

(p.18) Optimo 45-120 in The Search © Roger Arpajou
(p.26) Optimo Style 30-76 in Jérôme Dolbert's Documentary
– Peru's Rainforests Are Under Threat
(p.36) Optimo Anamorphic 56-152 in El Cielo del Centauro
by Hugo Santiago © Pierre Lazarus