

## Soft LED panels in a better light

The Astra 1x1 Soft Bi-Color panel builds on the popularity of the Astra 1x1 Family, the next generation of LED panels from the lighting professionals who revolutionized the lighting industry. The innovative Astra family of LED panels was years in the making, with every design element of these next generation panels being meticulously crafted.

Following the Litepanels tradition of a one square foot form factor, the Astra soft series is designed with select premium quality, high CRI, surface mount LEDs and paired with a soft diffusion panel that provides the Astra 1x1 soft series with a soft wrap around quality perfect for lighting talent and taking the edge off reflective surfaces. The Astra Soft Bi-color has an impressive output that rates among the highest of soft LED panels. This higher intensity results in a longer throw and illuminates a wider area, allowing the panel to compete with strong exterior light sources or illuminate a large area effectively with just a single fixture.

### FEATURES

- Flexible, modular concept
  - Optional communications module allows the brightness, color temperature, and cooling mode to be controlled via DMX or Bluetooth
  - Optional yoke mounted Gold Mount® or V-Mount battery plates
  - Field replaceable fan module and external power supply
- Modern fixture design
  - Easily identifiable and ergonomic manual controls for dimming, color, and power status
  - Aluminum I-beam core construction to provide maximum durability and superior thermal management
  - Aluminum accessory mounting points and lens/filter rails
  - End cap exhaust vents angle downward to direct air flow away from the fixture and help prevent foreign material from entering
  - Durable, industry standard 3-pin XLR locking power connector
- Custom curved yoke design
  - Wide, unobstructed tilt range
  - Yoke mounted power supply and optional battery plates with dual integrated cable guides
  - Removable TVMP connector for flexible mounting options
  - Two alternate ¼-20 mounting points

### ADVANTAGES

- Output is brighter than traditional LED panels
  - High performance LEDs with Soft diffusion panel
- Superior color reproduction
  - High color rendition (CRI)
  - Adjustable (daylight to tungsten), accurate color temperatures
- Efficient thermal management with user selectable dual cooling modes
  - Completely silent passive cooling mode
  - Ultra-quiet active cooling mode with double light output
- Ultra-smooth dimming
  - No noticeable color shift throughout the entire range
  - Flicker-free at any frame rate or shutter angle



**Astra 1x1 Soft Bi-Color**  
935-5001

# Litepanels Astra 1x1 Soft Bi-Color

935-5001

## ASTRA 1X1 SOFT BI-COLOR SPECS

**Color Temperature:** Tungsten-Daylight  
**Size:** 18.5" x 16.3" x 5.3" (46.9cm x 41.3cm x 13.5cm)  
**Weight:** 7.6lbs / 3.4kg  
**Power Requirements:** 13-24VDC  
**Maximum Power Draw:** 110W  
**International AC Power Supply:** 24VDC via AC adapter 100-240 VAC  
 DMX via Optional Communications Module (RJ45 or 5-Pin XLR)  
 Wireless control via Bluetooth Communications Module



Astra 1x1 Soft shown with accessory frame and Barndoors

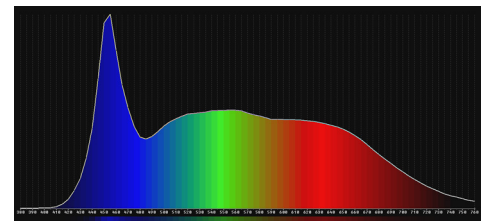
## OPTIONAL ACCESSORIES

- Adapter frame (900-3520)
- Honeycomb grid
  - Honeycomb grid - 30° (900-3017)
  - Honeycomb grid - 45° (900-3018)
  - Honeycomb grid - 60° (900-3019)
  - Honeycomb grid - 90° (900-3020)
- 4-way barndoors (900-3021)
- One light carrying case (900-3521)
- Two light carrying case (900-3522)
- Battery plate
  - Gold mount battery plate with cable (900-3507)
  - V-Mount battery plate with cable (900-3508)
- Communications module
  - RJ45 DMX module (900-3501)
  - 5-pin XLR DMX module (900-3502)
  - Bluetooth communications module (900-3519)
- RJ45 5-pin XLR conversion cable (900-0006)
- D-tap to 3-Pin XLR cable (900-0024)

## PHOTOMETRICS Beam Angle 93° / Field Angle 157°

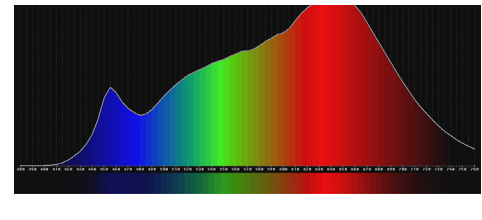
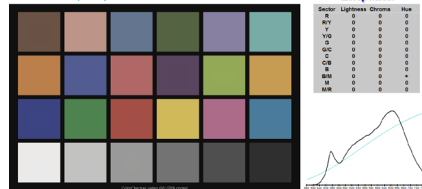
DAYLIGHT	Footcandles	LUX
3.5 ft / 1 m	198	2126
5 ft / 1.5 m	97	1042
6.5 ft / 2 m	57	616
10 ft / 3 m	24	260
15 ft / 4.5 m	11	116

Astra 1X1 Soft Bi-Color (Daylight): CCT = D6010 ( -1.0 )



TUNGSTEN	Footcandles	LUX
3.5 ft / 1 m	143	1542
5 ft / 1.5 m	70	756
6.5 ft / 2 m	42	447
10 ft / 3 m	18	189
15 ft / 4.5 m	8	84

Astra 1X1 Soft Bi-Color (Tungsten): CCT = P3136 ( +0.0 )



### The Litepanels Difference

Full spectrum quality soft light, with visually accurate color temperature  
 The widest variety of LED fixtures available, with flexible AC or DC power options  
 Smooth dimming from 100% to 0, with no noticeable color shift  
 Flicker-free performance at any frame rate or shutter angle  
 Controlled current and thermal management for long LED life  
 Efficient power management delivers low power consumption and enhanced reliability  
 Engineered and designed in Los Angeles, CA



Litepanels, a Vitec Group brand, was founded in 2001 by five professional gaffers and engineers who saw the future and pioneered LED (light emitting diode) lighting for motion pictures, television, and the audio-visual industry. Their Emmy® award-winning technology has now been used on thousands of productions worldwide and is trusted by the world's

leading broadcast organizations. Litepanels continues to expand its suite of flicker-free, color accurate, fully-dimmable soft lights that talent and lighting directors admire. These environmentally friendly fixtures can pay for themselves with power savings and long life, setting a new standard in professional lighting.